

Attachment C
Maps

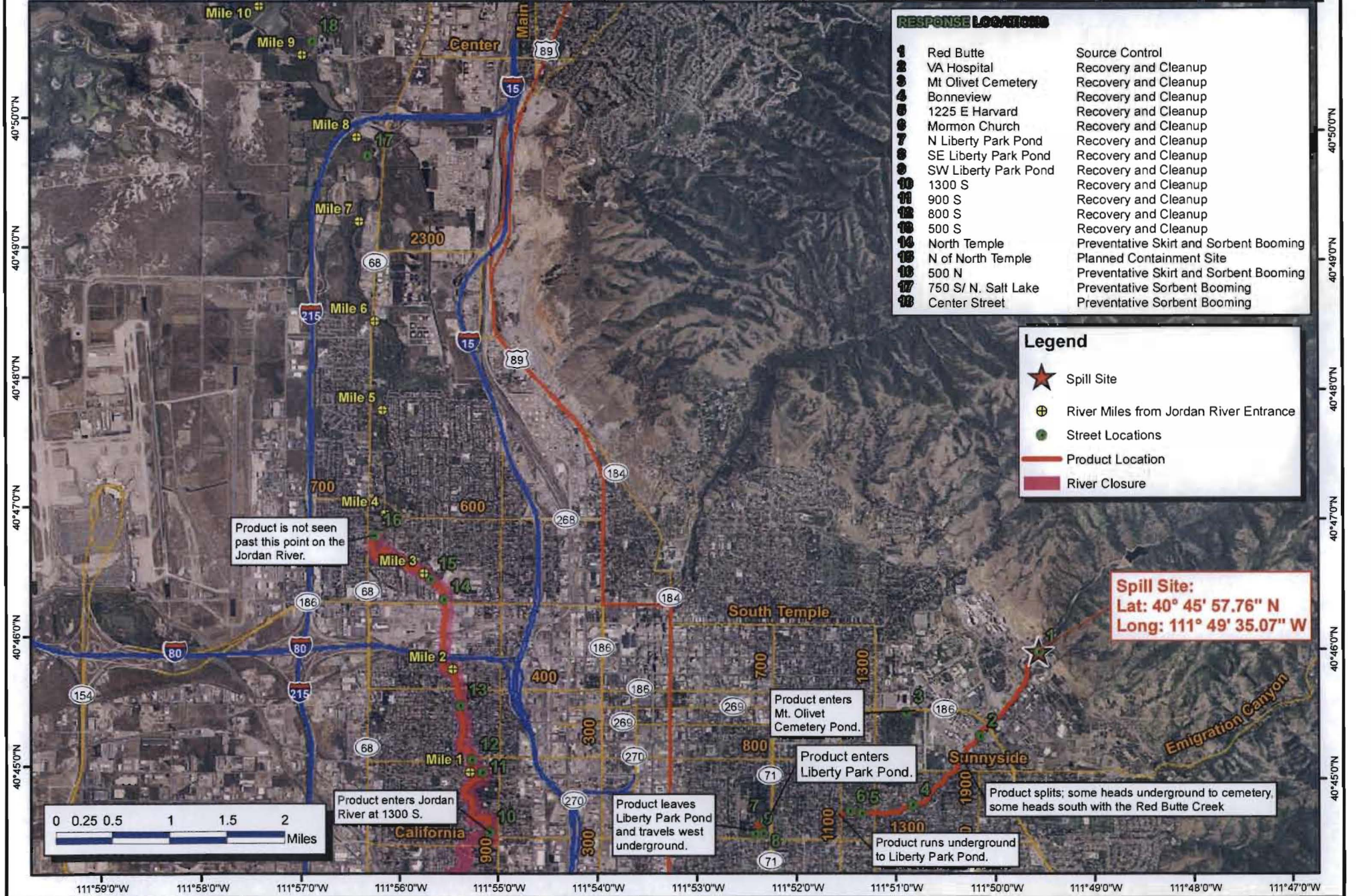


SLC- Red Butte Incident

Detailed Overview Map as of 6-17-2010 0800 Hrs



111°59'0"W 111°58'0"W 111°57'0"W 111°56'0"W 111°55'0"W 111°54'0"W 111°53'0"W 111°52'0"W 111°51'0"W 111°50'0"W 111°49'0"W 111°48'0"W 111°47'0"W



RESPONSE LOCATIONS		
1	Red Butte	Source Control
2	VA Hospital	Recovery and Cleanup
3	Mt Olivet Cemetery	Recovery and Cleanup
4	Bonneview	Recovery and Cleanup
5	1225 E Harvard	Recovery and Cleanup
6	Mormon Church	Recovery and Cleanup
7	N Liberty Park Pond	Recovery and Cleanup
8	SE Liberty Park Pond	Recovery and Cleanup
9	SW Liberty Park Pond	Recovery and Cleanup
10	1300 S	Recovery and Cleanup
11	900 S	Recovery and Cleanup
12	800 S	Recovery and Cleanup
13	500 S	Recovery and Cleanup
14	North Temple	Preventative Skirt and Sorbent Booming
15	N of North Temple	Planned Containment Site
16	500 N	Preventative Skirt and Sorbent Booming
17	750 S/ N. Salt Lake	Preventative Sorbent Booming
18	Center Street	Preventative Sorbent Booming

Legend	
	Spill Site
	River Miles from Jordan River Entrance
	Street Locations
	Product Location
	River Closure

Product is not seen past this point on the Jordan River.

Spill Site:
 Lat: 40° 45' 57.76" N
 Long: 111° 49' 35.07" W

Product enters Mt. Olivet Cemetery Pond.

Product enters Liberty Park Pond.

Product splits; some heads underground to cemetery, some heads south with the Red Butte Creek



Product enters Jordan River at 1300 S.

Product leaves Liberty Park Pond and travels west underground.

Product runs underground to Liberty Park Pond.

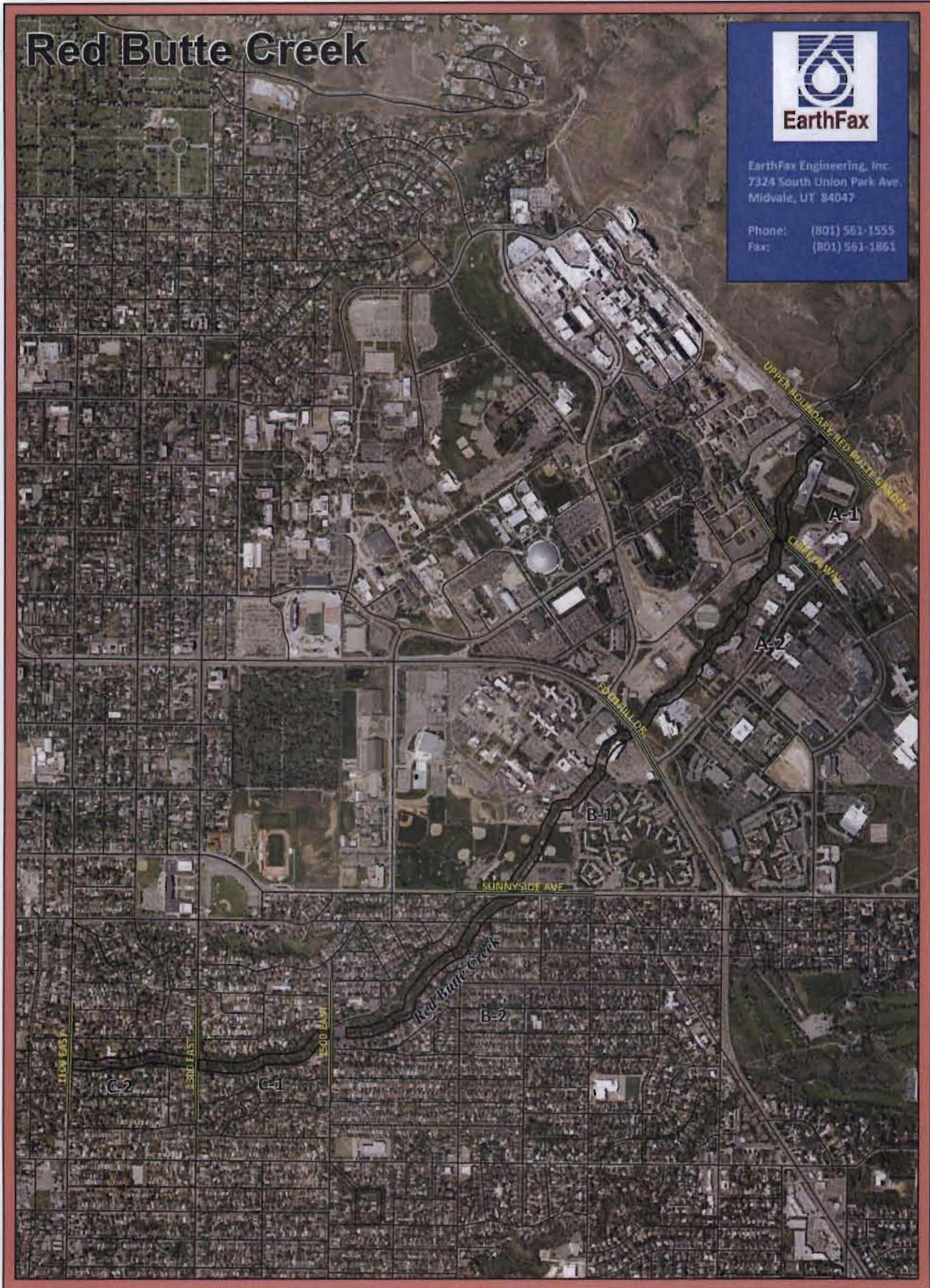
111°59'0"W 111°58'0"W 111°57'0"W 111°56'0"W 111°55'0"W 111°54'0"W 111°53'0"W 111°52'0"W 111°51'0"W 111°50'0"W 111°49'0"W 111°48'0"W 111°47'0"W

Red Butte Creek



EarthFax Engineering, Inc.
7324 South Union Park Ave.
Midvale, UT 84047

Phone: (801) 561-1555
Fax: (801) 561-1861



LEGEND

- A-1, A-2... Segment Label
- Separators
- Roads

OVERVIEW MAP

Red Butte Creek

Location: Red Butte Creek
Mapped: July 30, 2010

0 65 130 260 390 520
Meters



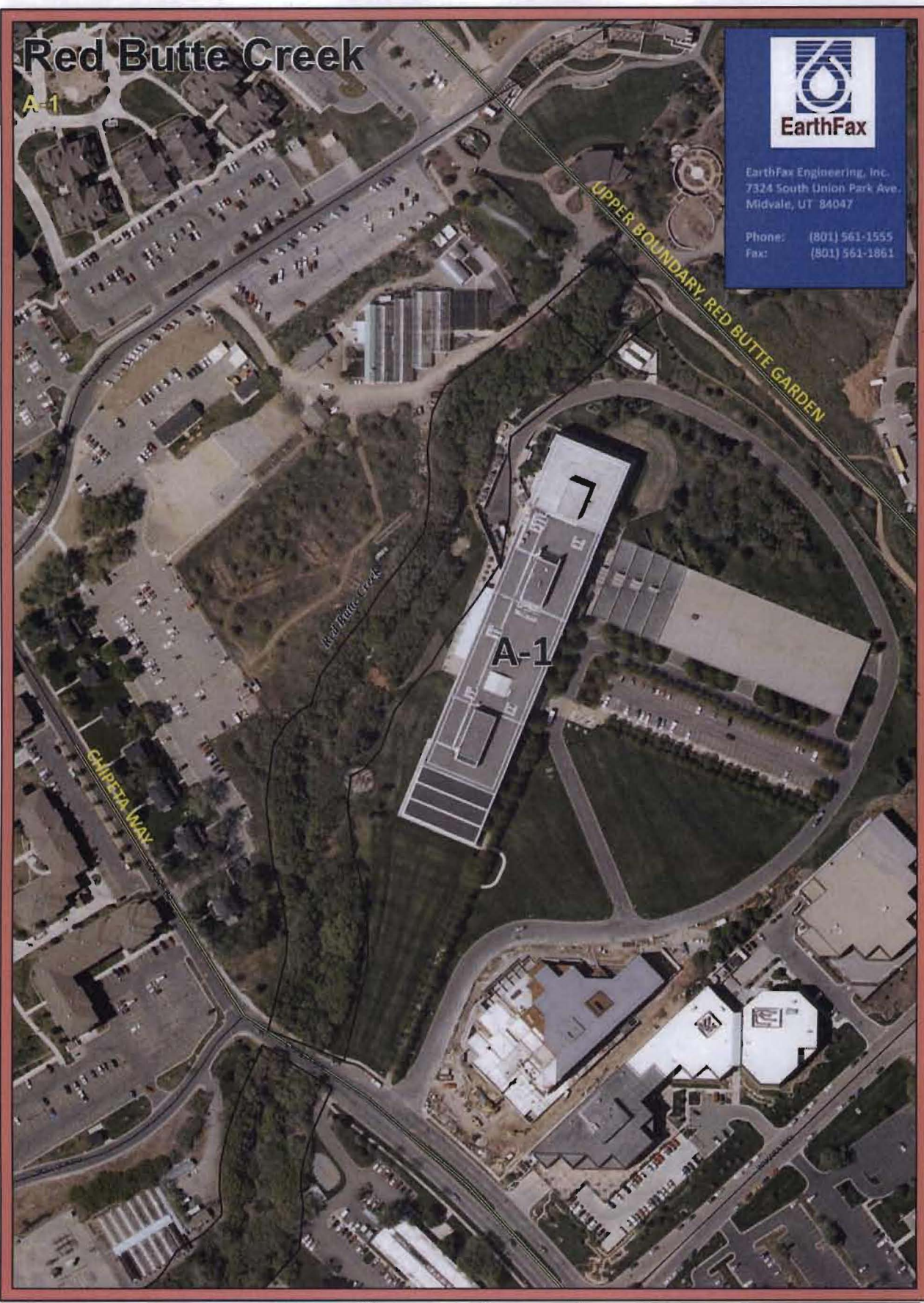
Red Butte Creek

A-1



EarthFax Engineering, Inc.
7324 South Union Park Ave.
Midvale, UT 84047

Phone: (801) 561-1555
Fax: (801) 561-1861



LEGEND

- A-1, A-2... Segment Label
- Separators
- Roads



0 10 20 40 60 80 Meters

A-1

Red Butte Creek

Location: Red Butte Creek
Mapped: July 30, 2010

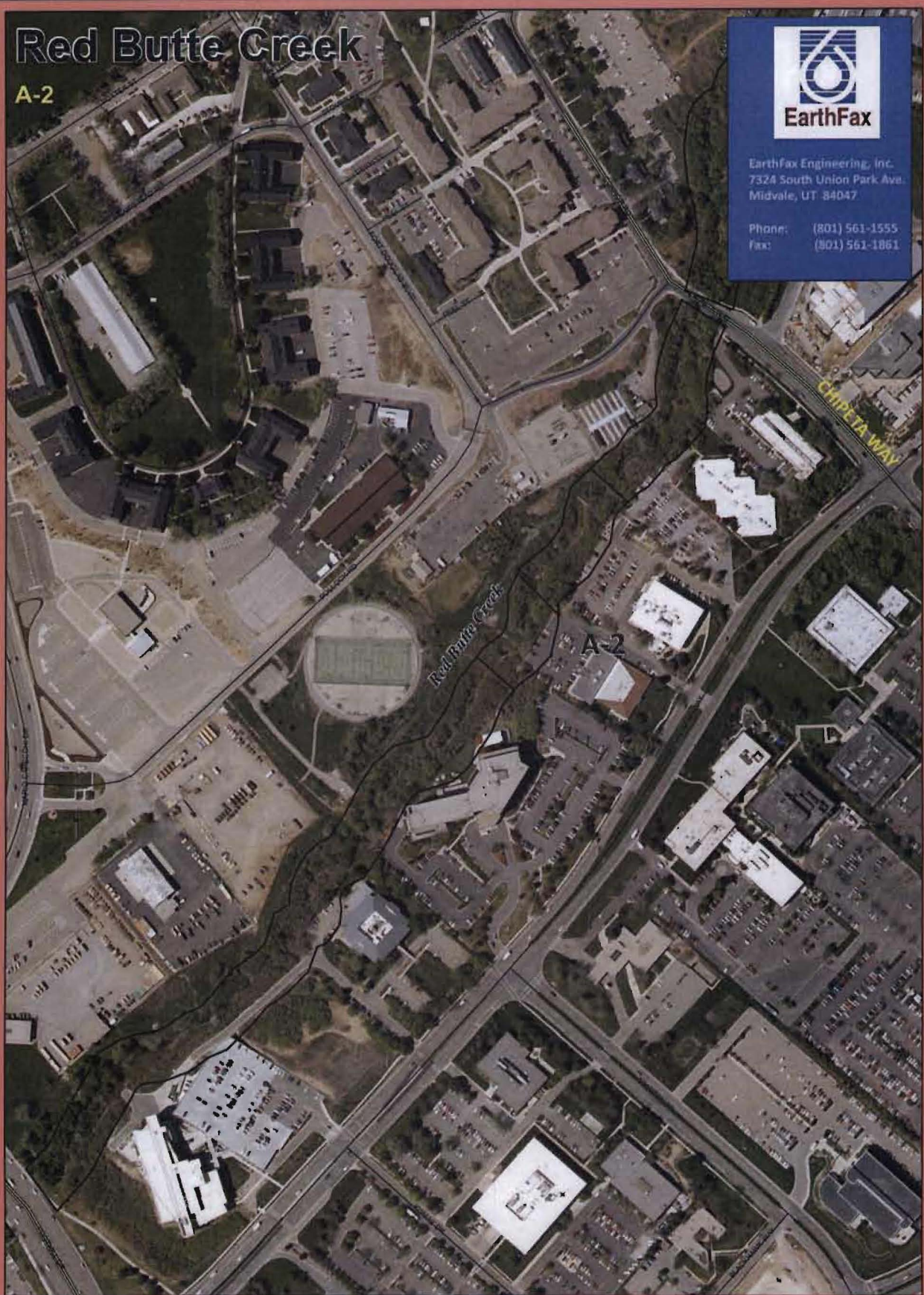
Red Butte Creek

A-2



EarthFax Engineering, Inc.
7324 South Union Park Ave.
Midvale, UT 84047

Phone: (801) 561-1555
Fax: (801) 561-1861



LEGEND

- A-1, A-2... Segment Label
- Separators
- Roads



0 15 30 60 90 120 Meters

A-2

Red Butte Creek

Location: Red Butte Creek
Mapped: July 30, 2010

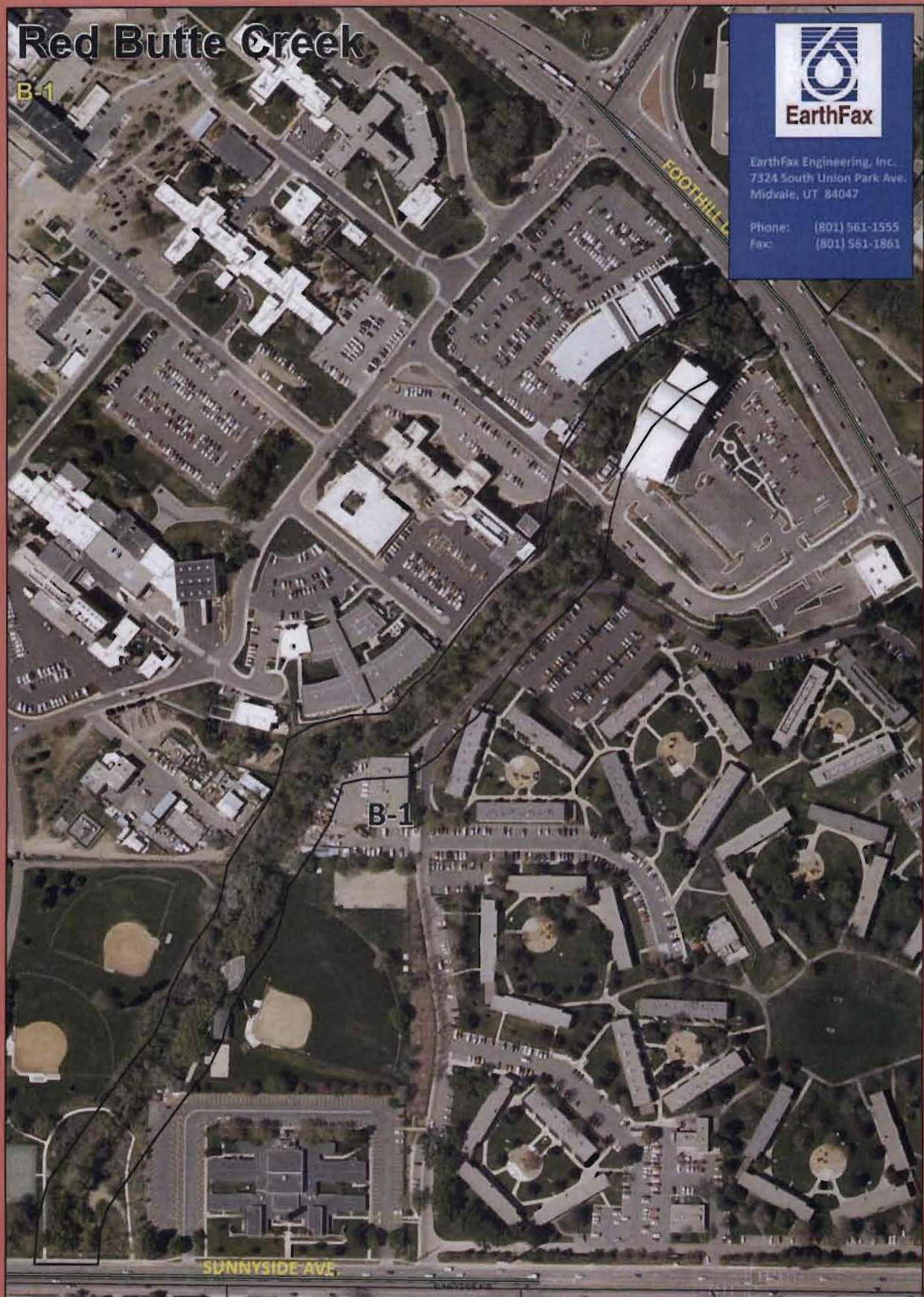
Red Butte Creek

B-1



EarthFax Engineering, Inc.
7324 South Union Park Ave.
Midvale, UT 84047

Phone: (801) 561-1555
Fax: (801) 561-1861



LEGEND

- A-1, A-2... Segment Label
- Separators
- Roads



0 12.5 25 50 75 100 Meters

B-1

Red Butte Creek

Location: Red Butte Creek
Mapped: July 30, 2010

Red Butte Creek

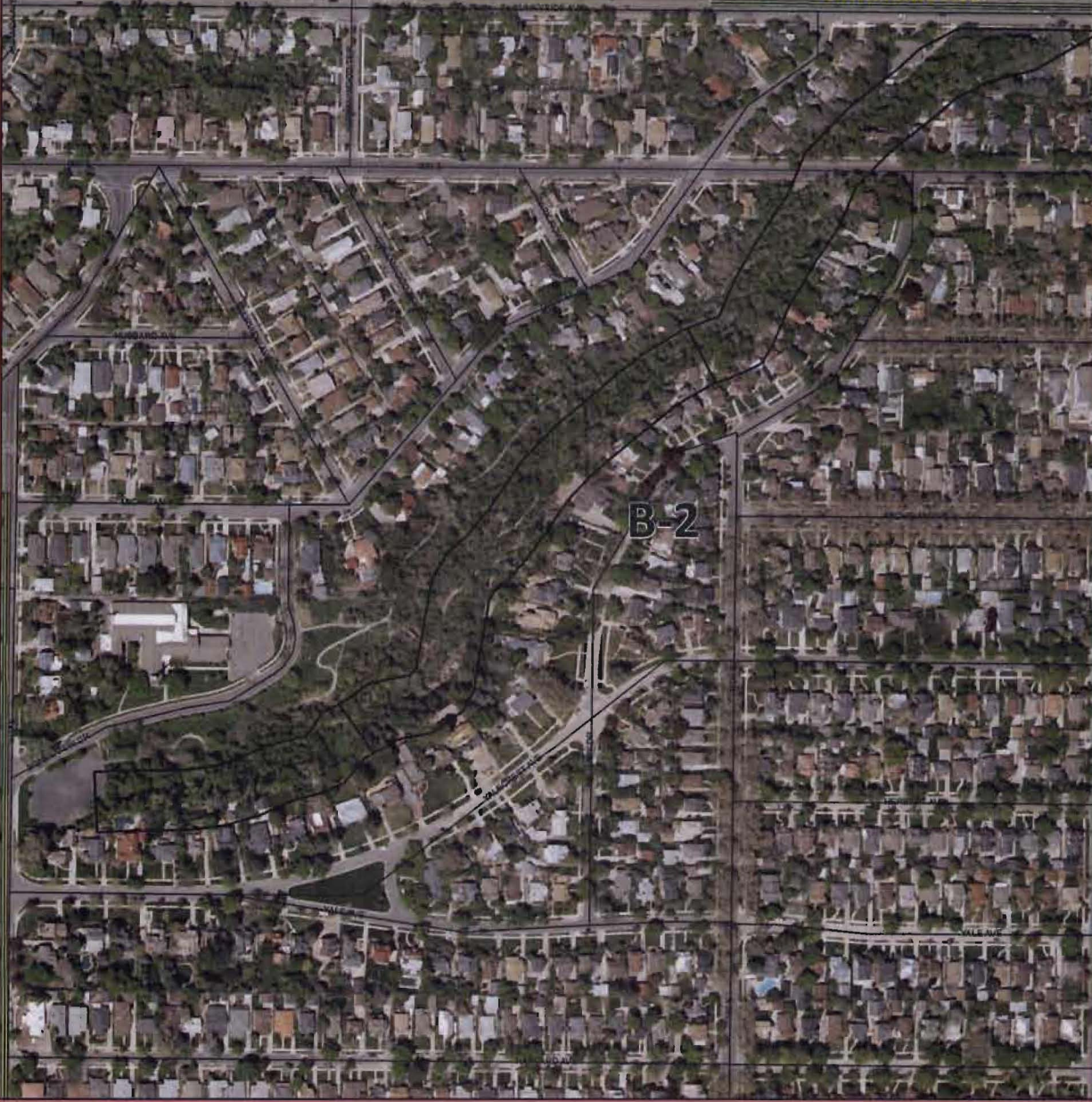
B-2



EarthFax Engineering, Inc.
7324 South Union Park Ave.
Midvale, UT 84047

Phone: (801) 561-1555
Fax: (801) 561-1861

SUNNYSIDE AVE.



B-2

LEGEND

- A-1, A-2... Segment Label
- Separators
- Roads



0 15 30 60 90 120
Meters

B-2

Red Butte Creek

Location: Red Butte Creek
Mapped: July 30, 2010

Red Butte Creek



EarthFax Engineering, Inc.
7324 South Union Park Ave.
Midvale, UT 84047

Phone: (801) 561-1555
Fax: (801) 561-1861

C-1

1300 EAST

1500 EAST

C-1

LEGEND

- A-1, A-2... Segment Label
- Separators
- Roads



0 12.5 25 50 75 100 Meters

C-1

Red Butte Creek

Location: Red Butte Creek
Mapped: July 30, 2010

Red Butte Creek



EarthFax Engineering, Inc.
7324 South Union Park Ave.
Midvale, UT 84047
Phone: (801) 561-1555
Fax: (801) 561-1861

C-2

1100 EAST

1300 EAST

C-2

LEGEND

- A-1, A-2... Segment Label
- Separators
- Roads



0 12.5 25 50 75 100 Meters

C-2

Red Butte Creek

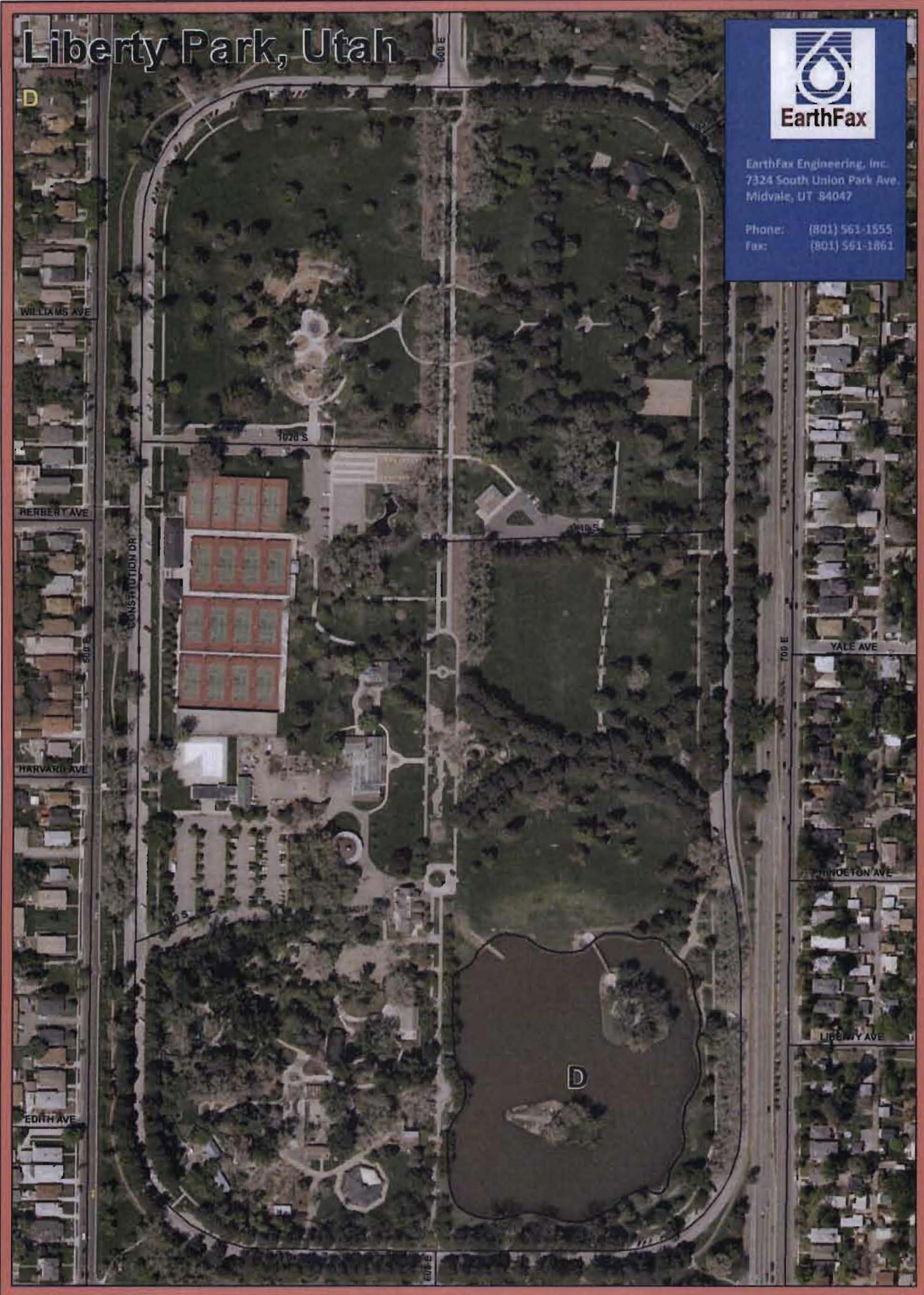
Location: Red Butte Creek
Mapped: July 30, 2010

Liberty Park, Utah



EarthFax Engineering, Inc.
7324 South Union Park Ave.
Midvale, UT 84047

Phone: (801) 561-1555
Fax: (801) 561-1861



LEGEND

A-1, A-2... Segment Label

- Separators
- Roads

D

Liberty Park Pond

Location: Liberty Park
Mapped: July 30, 2010

0 10 20 40 60 80
Meters

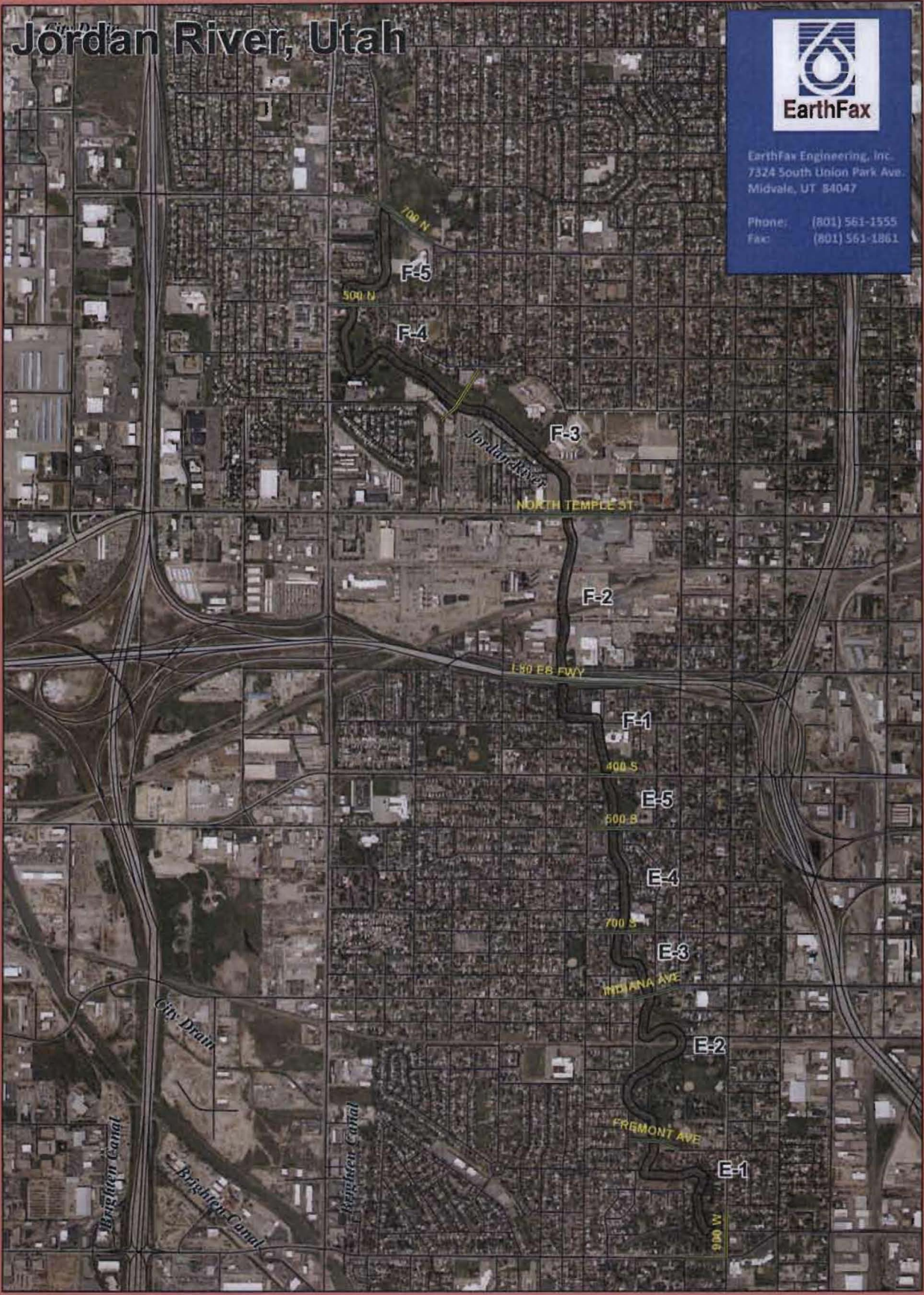


Jordan River, Utah



EarthFax Engineering, Inc.
7324 South Union Park Ave.
Midvale, UT 84047

Phone: (801) 561-1555
Fax: (801) 561-1861



LEGEND

A-1, A-2... Segment Label

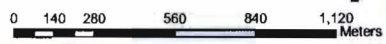
— Separators

— Roads

OVERVIEW MAP

Jordan River

Location: Jordan River
Mapped: July 30, 2010



Jordan River, Utah

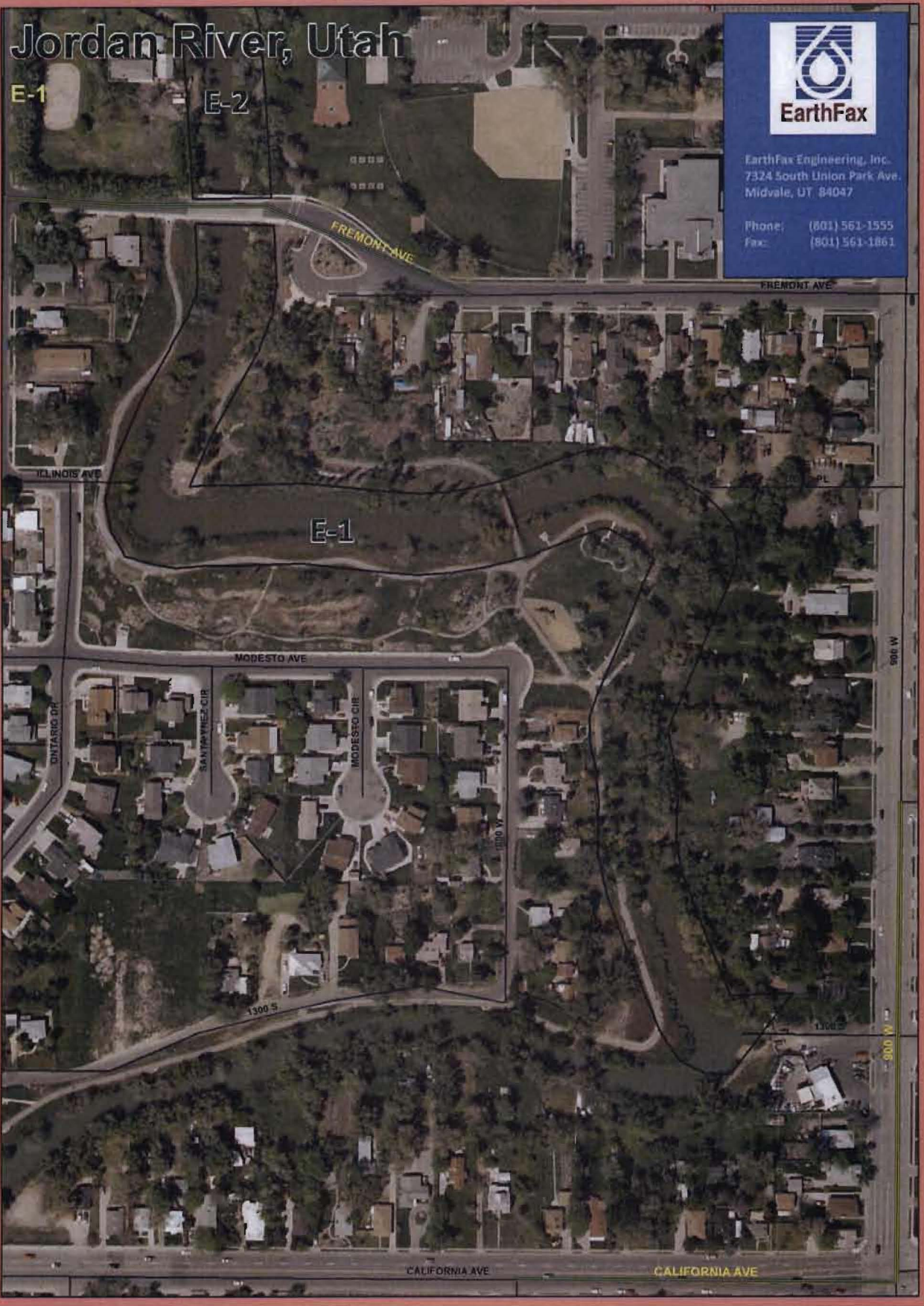
E-1

E-2



EarthFax Engineering, Inc.
7324 South Union Park Ave.
Midvale, UT 84047

Phone: (801) 561-1555
Fax: (801) 561-1861



LEGEND

A-1, A-2... Segment Label

— Separators

— Roads

E-1

Jordan River

Location: Jordan River
Mapped: July 30, 2010

0 10 20 40 60 80 Meters

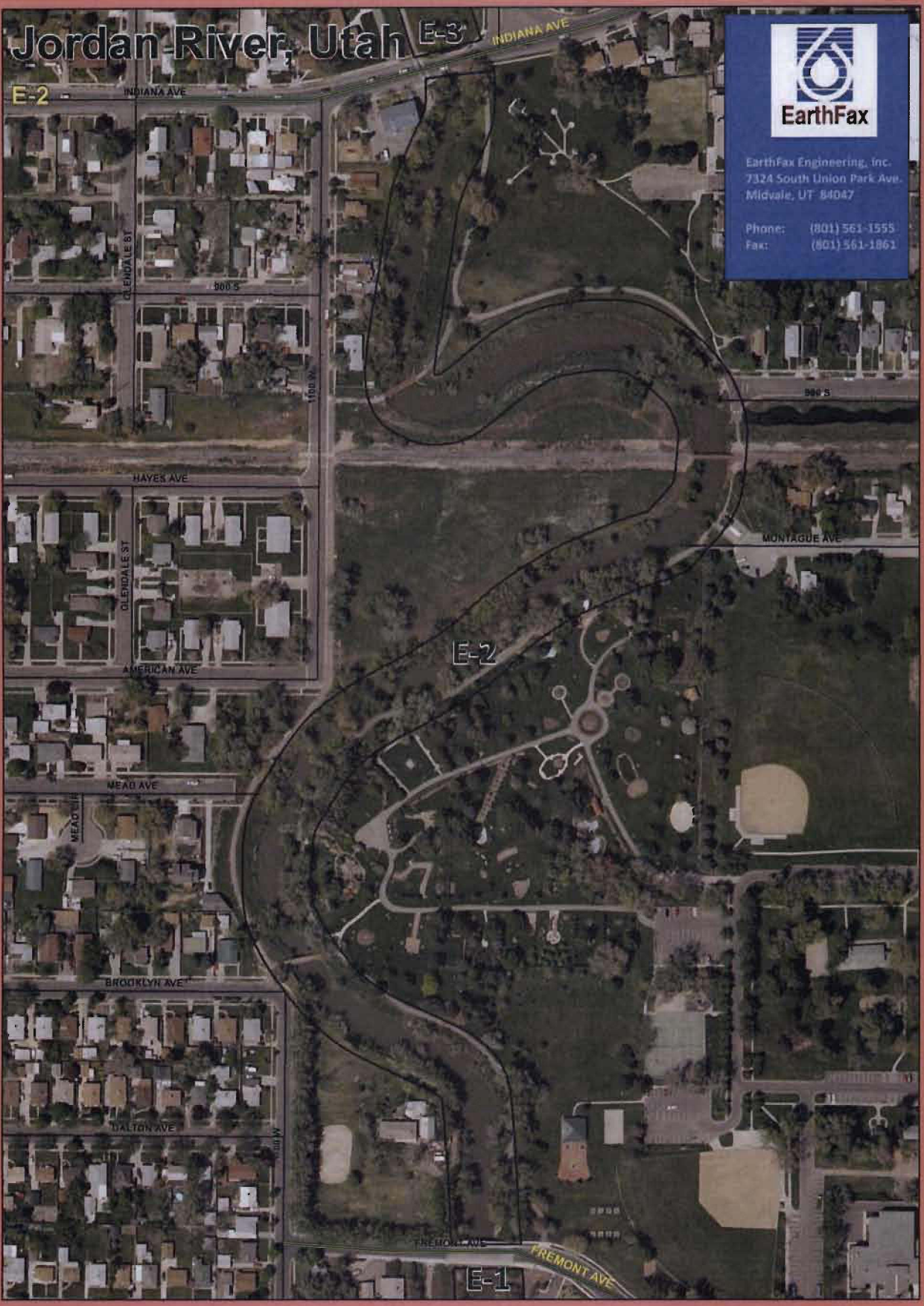


Jordan River, Utah E-3



EarthFax Engineering, Inc.
7324 South Union Park Ave.
Midvale, UT 84047

Phone: (801) 561-1555
Fax: (801) 561-1861



LEGEND

A-1, A-2... Segment Label

— Separators

— Roads

E-2

Jordan River

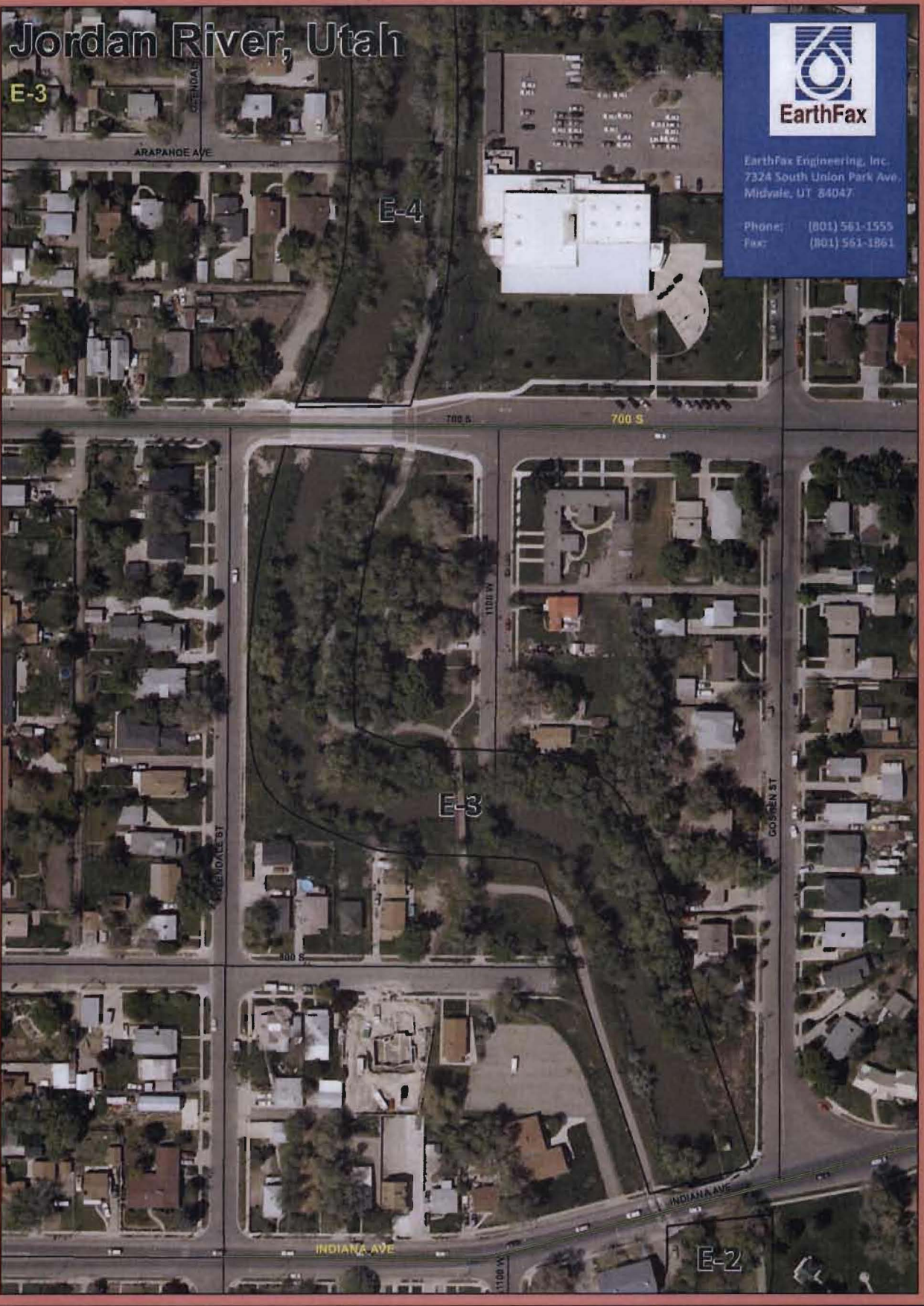
Location: Jordan River
Mapped: July 30, 2010

0 12.5 25 50 75 100
Meters



Jordan River, Utah

E-3

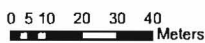


EarthFax Engineering, Inc.
7324 South Union Park Ave,
Midvale, UT 84047

Phone: (801) 561-1555
Fax: (801) 561-1861

LEGEND

- A-1, A-2... Segment Label
- Separators
- Roads



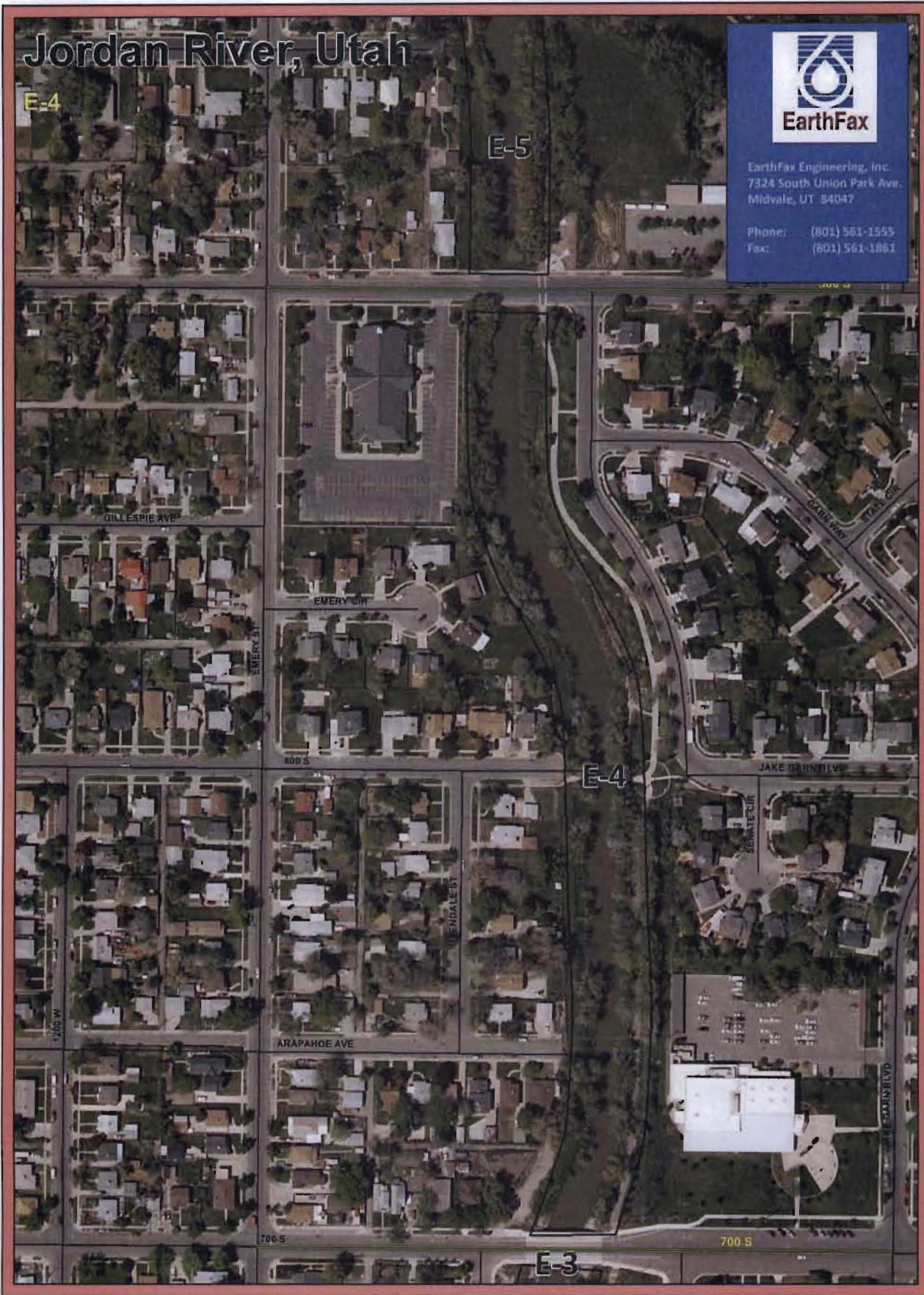
E-3
Jordan River
Location: Jordan River
Mapped: July 30, 2010

Jordan River, Utah



EarthFax Engineering, Inc.
7324 South Union Park Ave.
Midvale, UT 84047

Phone: (801) 561-1555
Fax: (801) 561-1861



LEGEND

A-1, A-2... Segment Label

— Separators

— Roads

E-4

Jordan River

Location: Jordan River
Mapped: July 30, 2010

0 510 20 30 40
Meters



Jordan River, Utah



EarthFAX Engineering, Inc.
7324 South Union Park Ave.
Midvale, UT 84047

Phone: (801) 561-1555
Fax: (801) 561-1861

E-5

F-1

400 S

400 S

EMERY ST

PACIFIC AVE

E-5

500 S

500 S

JANE GARN BLVD

E-4

LEGEND

A-1, A-2... Segment Label

— Separators

— Roads

E-5

Jordan River

Location: Jordan River
Mapped: July 30, 2010

0 3.6 12 18 24
Meters



Jordan River, Utah

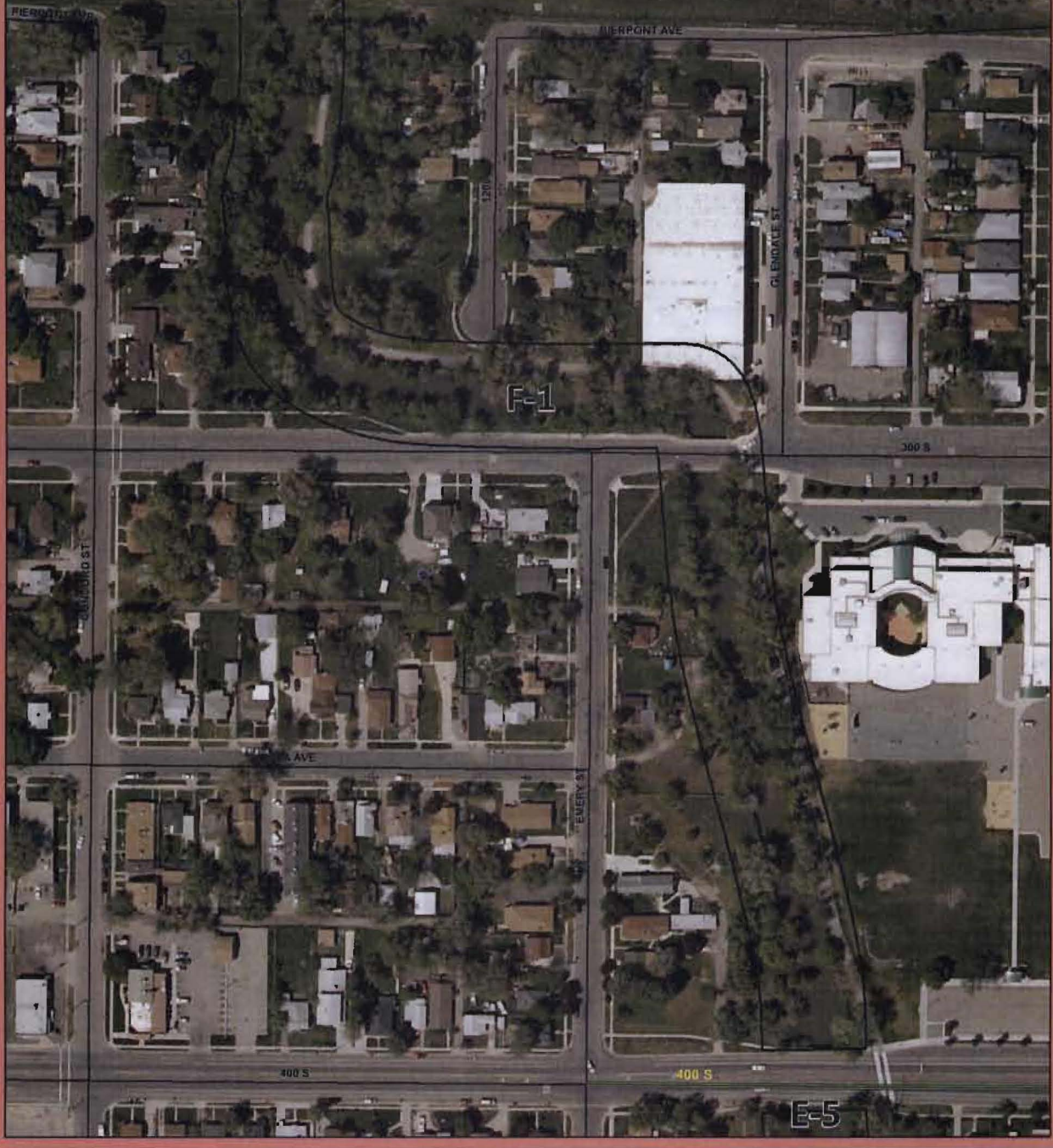
F-1

F-2



EarthFax Engineering, Inc.
7324 South Union Park Ave.
Midvale, UT 84047

Phone: (801) 561-1555
Fax: (801) 561-1861



LEGEND

- A-1, A-2... Segment Label
- Separators
- Roads

F-1

Jordan River

Location: Jordan River
Mapped: July 30, 2010

0 10 20 40 60 80 Meters



Jordan River, Utah

F-3

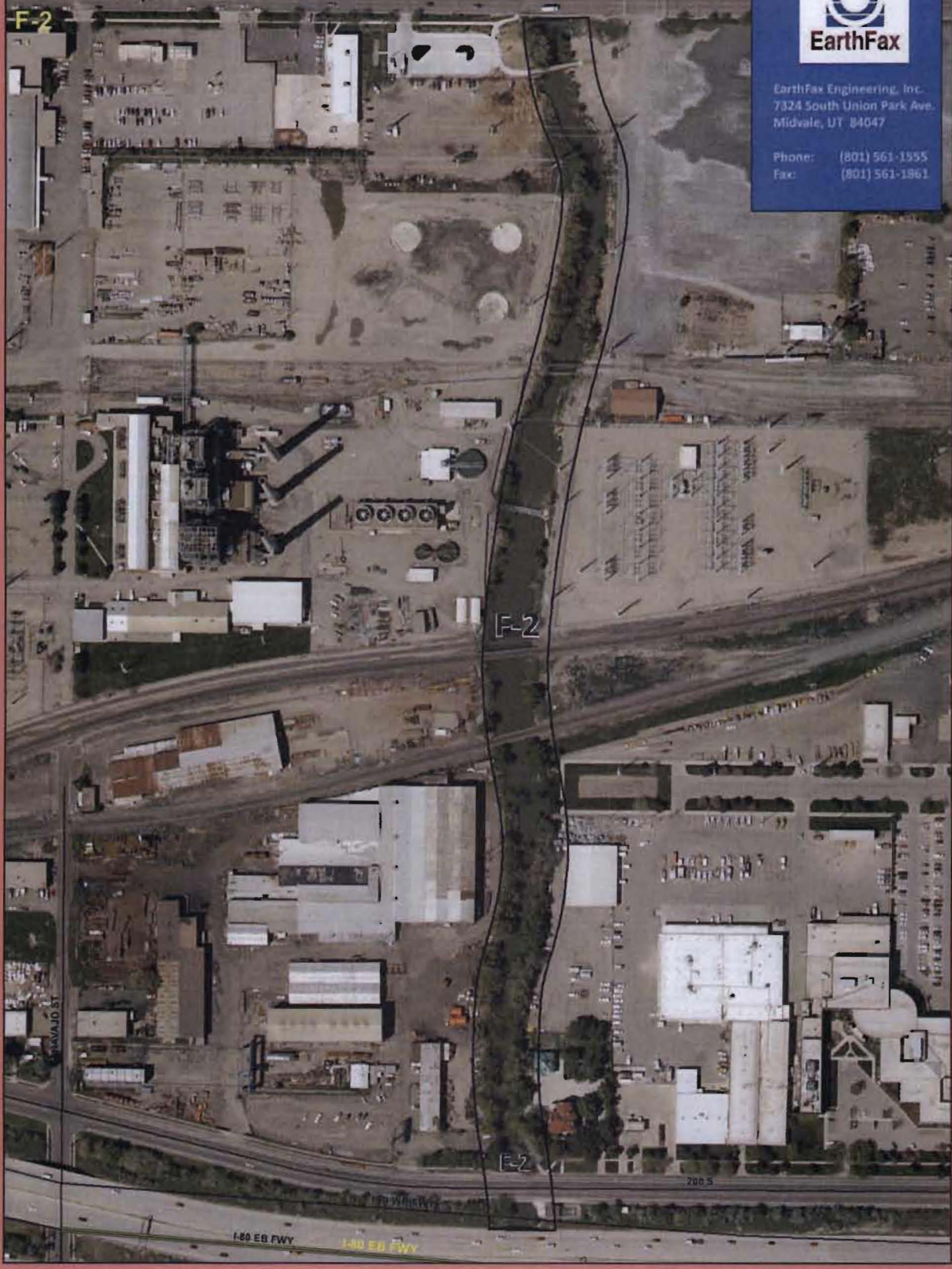
NORTH

F-2



EarthFax Engineering, Inc.
7324 South Union Park Ave.
Midvale, UT 84047

Phone: (801) 561-1555
Fax: (801) 561-1861



LEGEND

A-1, A-2... Segment Label

— Separators

— Roads

F-2

Jordan River

Location: Jordan River
Mapped: July 30, 2010

0 12.5 25 50 75 100 Meters



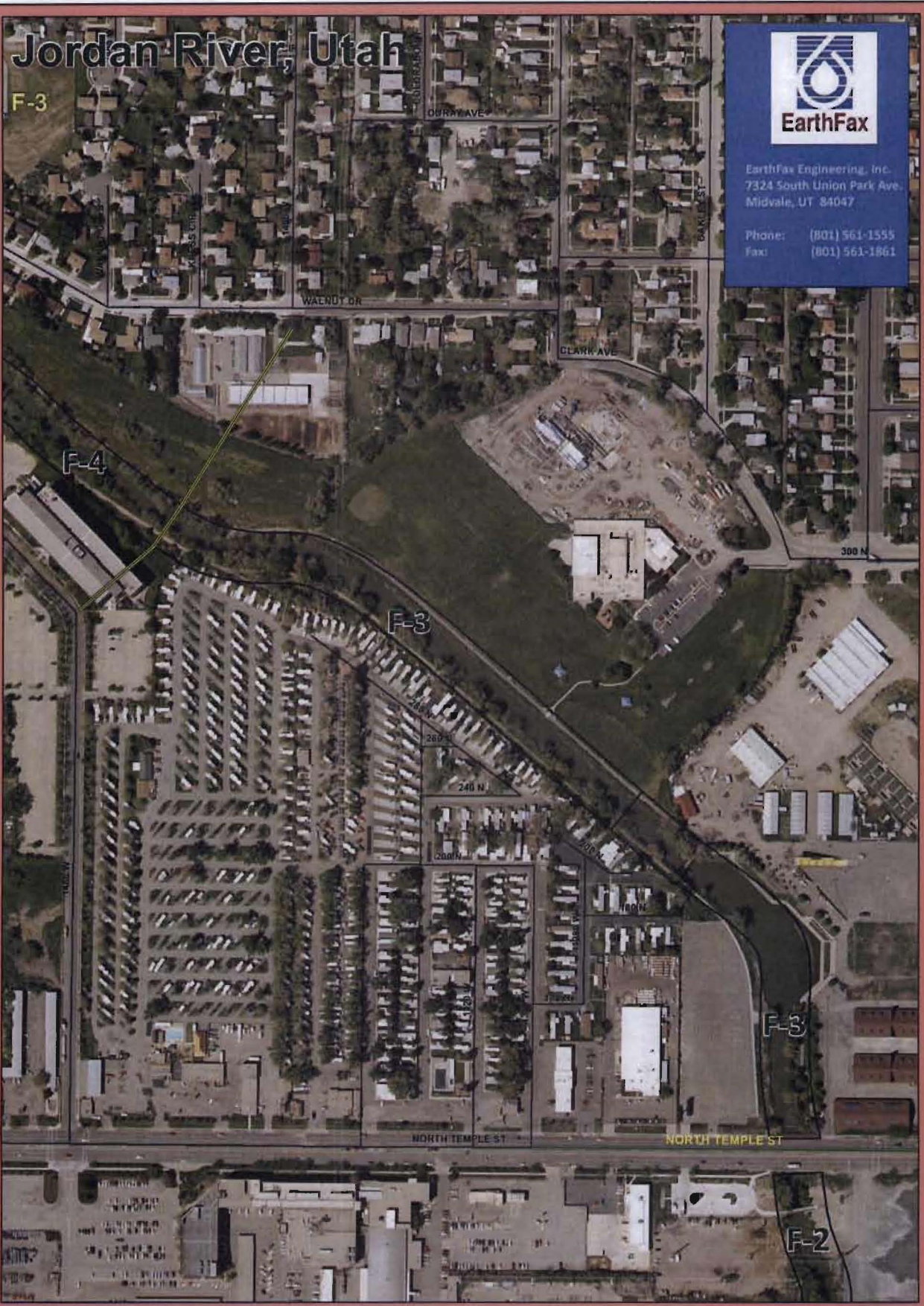
Jordan River, Utah

F-3



EarthFax Engineering, Inc.
7324 South Union Park Ave.
Midvale, UT 84047

Phone: (801) 561-1555
Fax: (801) 561-1861



LEGEND

A-1, A-2... Segment Label

— Separators

— Roads

F-3

Jordan River

Location: Jordan River
Mapped: July 30, 2010

0 15 30 60 90 120 Meters

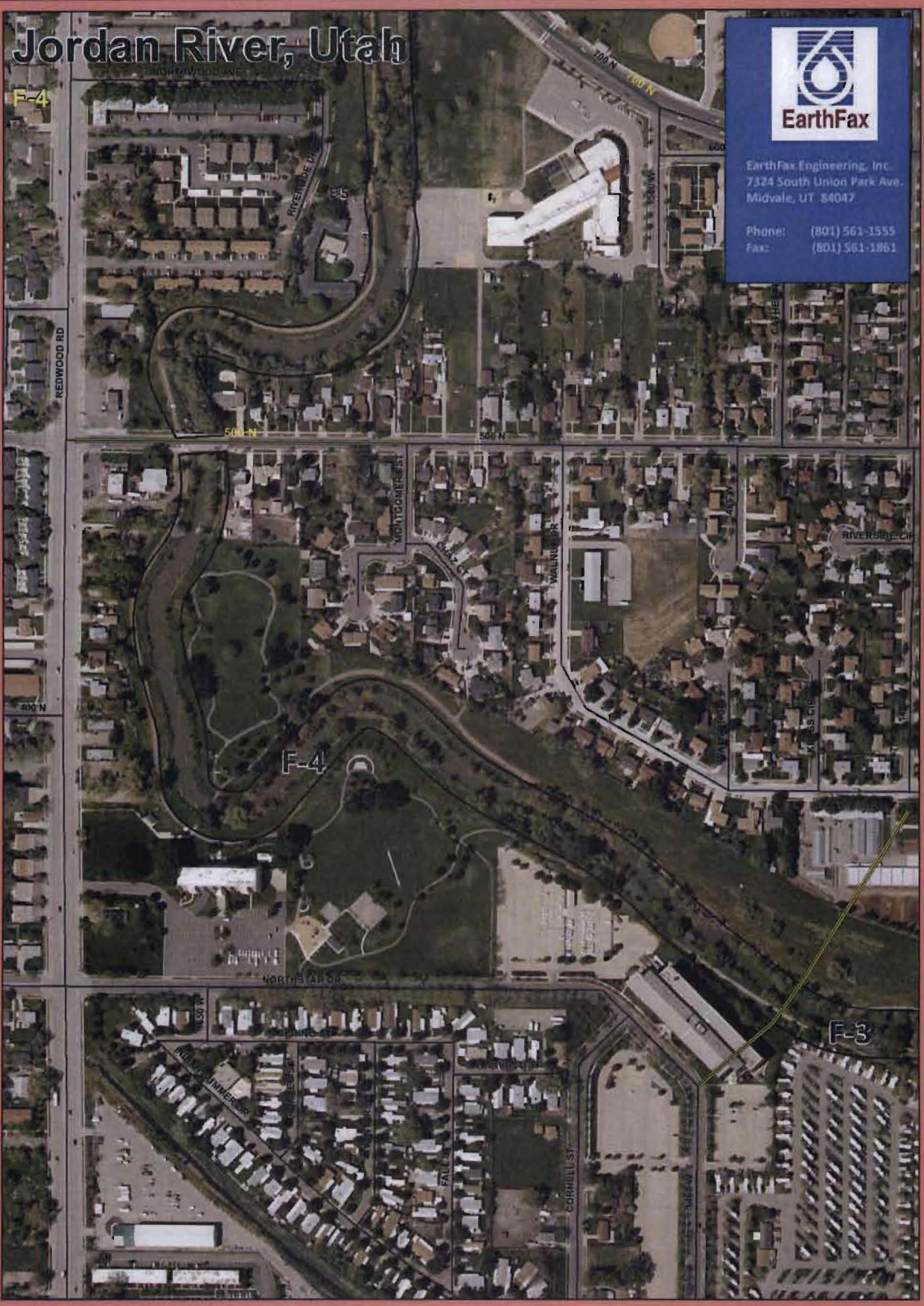


Jordan River, Utah



EarthFax Engineering, Inc.
7324 South Union Park Ave.
Midvale, UT 84047

Phone: (801) 561-1555
Fax: (801) 561-1861



LEGEND

A-1, A-2... Segment Label

— Separators

— Roads

F-4

Jordan River

Location: Jordan River
Mapped: July 30, 2010

0 15 30 60 90 120
Meters

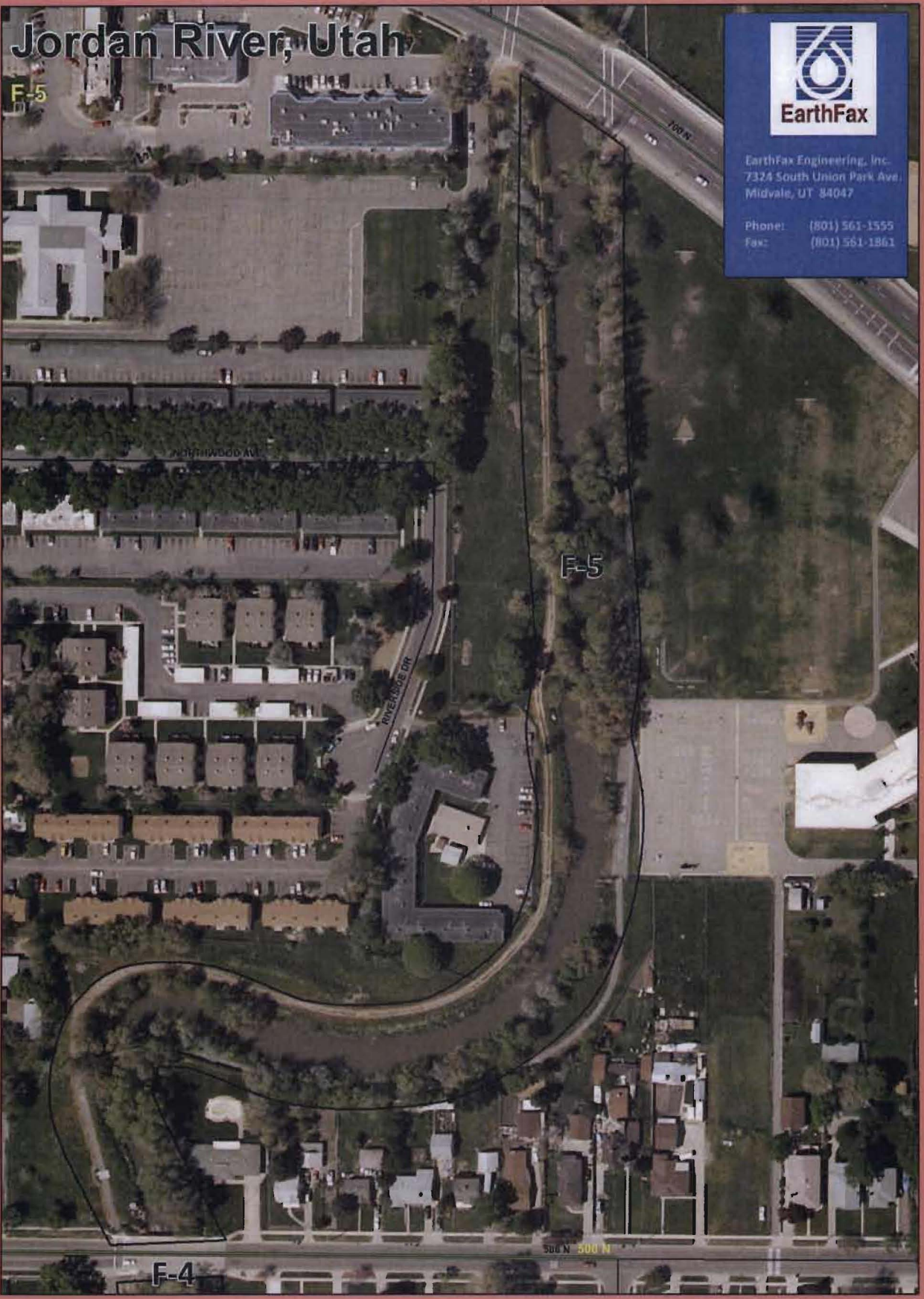


Jordan River, Utah



EarthFax Engineering, Inc.
7324 South Union Park Ave.
Midvale, UT 84047

Phone: (801) 561-1555
Fax: (801) 561-1861



LEGEND

A-1, A-2... Segment Label

— Separators

— Roads

F-5

Jordan River

Location: Jordan River
Mapped: July 30, 2010

0 5 10 20 30 40
Meters

